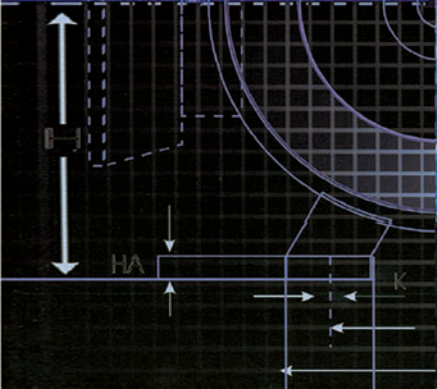


JEMCO




JEMCO



CERTIFICATE

IGNet and DQS GmbH

certifies that the organiza

ELECTRICAL MACHINES INDU

Office

Rd Alley, Khales Islamboli St.
Tehran - IRAN

CERTIFI

DQS GmbH

hereby certifies that th

ELECTRICAL MACHINES

on

No. 26.3 Rd Alley, Te

Terra

F

45* KM Esfar

Esfa

and Sales

has

all

d

r



ISO 9001:2008

Alliance
International Registrar, LLC

Hereby Certifies:

Jovain Electrical Machines Industries (JEMCO)

Located at:
45th Km of Esfarayen Road, Sabzevar, Iran.

To the

ISO 9001:2008

Standard and has successfully implemented a Quality Management System which has been registered by Alliance International Registrar, LLC.

SCOPE ISO9001:2008 for Design, Manufacturing & Sale of 3-Phases Induction Motors and Generators.

IAF Code: 19
NACE Code: DL311
Certification Number: 2041
Date of Certification: September 27, 2012
Expiration Date: September 26, 2013

A

Sharon A. Kline
Sharon L. Kline
Director of Certification
Alliance International Registrar, LLC
900 Foster Ave., Ste. 5A, Fryeburg, ME 04930
www.allianceregistrar.com

AIPA

Accreditation Board

AB
ACCREDITATION
Calibration Laboratories

EDITATION

Electrical Machines Industries (JEMCO)

and hereby confirms that the above company conforms to

Standard:- ISO/IEC17025:2005

in accordance to the requirements for the Competence of Testing & Calibration Laboratories for their for the location indicated herein

45th Km of Esfarayen Road, Sabzevar, Iran.

In the field of

Testing 3-Phases Induction Motors and Generators.

Valid for North America Div.
Member - ABC082003
Valid Issued- Nov.12, 2011
Valid thru- Nov.31, 2012

Special projects services
NAAB accreditation

This certificate remains valid for the scope of Accreditation as specified in the annex subject to continued satisfactory compliance to the rules contained in the additional requirements of NAAB-IL-ACC.



Tel : (+9821) 88303041-5
Fax : (+9821) 88830683
P.O.B. 15875 - 9581

Web site: www.jemcomotor.ir
E-mail: sales@jemcomotor.ir

تلفن : ۸۸۳۰۳۰۴۱-۵
نمابر : ۸۸۸۳۰۶۸۳
صندوق پستی : ۱۵۸۷۵-۹۵۸۱

TYPE YK - MEDIUM VOLTAGE (6000V) SQUIRREL CAGE MOTORS

TECHNICAL DATA



شرکت صنایع ماشینهای الکتریکی جوین (جمکو)
Jovain Electrical Machines Industries Co.(JEMCO)

Degree of Protection : IP 55 , 50Hz , IM B3 , Insulation Class:F , Thermal Class B

| Type No. | Rated output | Frame size | Moment of inertia J | Performance at rated output | | | | Locked-rotor torque | Locked-rotor current | Break-down torque | Weight approx | |
|------------------------------|--------------|------------|---------------------|-----------------------------|-------------------|-------------------------|------------------------|---------------------|----------------------|-------------------|---------------|--------------|
| | | | | Rated speed | Efficiency η | Power factor Cos ϕ | Rated current at 380 V | | | | | Rated torque |
| | | | | rev/min | % | | A | | | | | Nm |
| 1500 rev/min - 4poles | | | | | | | | | | | | |
| YK1351-4A0 | 220 | 355 | 4.50 | 1484 | 93.3 | 0.85 | 25 | 1416 | 0.8 | 6.5 | 1.8 | 2300 |
| YK1352-4A0 | 250 | 355 | 4.50 | 1483 | 93.4 | 0.85 | 29 | 1610 | 0.8 | 6.5 | 1.8 | 2360 |
| YK1353-4A0 | 280 | 355 | 4.75 | 1484 | 93.5 | 0.86 | 33 | 1802 | 0.8 | 6.5 | 1.8 | 2400 |
| YK1354-4A0 | 315 | 355 | 5.00 | 1483 | 93.6 | 0.86 | 37 | 2028 | 0.8 | 6.5 | 1.8 | 2450 |
| YK1401-4A0 | 355 | 400 | 9.00 | 1485 | 93.8 | 0.86 | 40 | 2283 | 0.8 | 6.5 | 1.8 | 2870 |
| YK1402-4A0 | 400 | 400 | 10.00 | 1484 | 94.0 | 0.86 | 45 | 2574 | 0.8 | 6.5 | 1.8 | 2960 |
| YK1403-4A0 | 450 | 400 | 11.00 | 1484 | 94.2 | 0.86 | 50 | 2996 | 0.8 | 6.5 | 1.8 | 3115 |
| YK1404-4A0 | 500 | 400 | 12.00 | 1485 | 94.3 | 0.87 | 56 | 3215 | 0.8 | 6.5 | 1.8 | 3250 |
| YK1405-4A0 | 560 | 400 | 13.00 | 1486 | 94.5 | 0.87 | 63 | 3599 | 0.8 | 6.5 | 1.8 | 3340 |
| YK1451-4A0 | 630 | 450 | 18.50 | 1487 | 94.8 | 0.87 | 71 | 4046 | 0.8 | 6.5 | 1.8 | 4006 |
| YK1452-4A0 | 710 | 450 | 20.75 | 1487 | 95.0 | 0.87 | 79 | 4559 | 0.8 | 6.5 | 1.8 | 4080 |
| YK1453-4A0 | 800 | 450 | 22.75 | 1488 | 95.1 | 0.87 | 90 | 5134 | 0.8 | 6.5 | 1.8 | 4140 |
| YK1454-4A0 | 900 | 450 | 23.75 | 1487 | 95.2 | 0.87 | 100 | 5779 | 0.8 | 6.5 | 1.8 | 4200 |
| YK1501-4A0 | 1000 | 500 | 23.75 | 1489 | 95.3 | 0.87 | 111 | 6413 | 0.7 | 6.5 | 1.8 | 4790 |
| YK1502-4A0 | 1120 | 500 | 35.25 | 1490 | 95.4 | 0.88 | 123 | 7178 | 0.7 | 6.5 | 1.8 | 4960 |
| YK1503-4A0 | 1250 | 500 | 38.75 | 1490 | 95.5 | 0.88 | 138 | 8011 | 0.7 | 6.5 | 1.8 | 5140 |
| YK1504-4A0 | 1400 | 500 | 42.00 | 1490 | 95.6 | 0.88 | 155 | 8972 | 0.7 | 6.5 | 1.8 | 5340 |
| YK1551-4A0 | 1600 | 560 | 54.00 | 1490 | 95.7 | 0.89 | 173 | 10254 | 0.6 | 6.5 | 1.8 | 6330 |
| YK1552-4A0 | 1800 | 560 | 57.50 | 1491 | 95.8 | 0.89 | 195 | 11528 | 0.6 | 6.5 | 1.8 | 6530 |
| YK1563-4A0 | 2000 | 560 | 64.50 | 1491 | 95.9 | 0.89 | 216 | 12809 | 0.6 | 6.5 | 1.8 | 6915 |
| 1000 rev/min - 6poles | | | | | | | | | | | | |
| YK1351-6A0 | 250 | 355 | 9.75 | 990 | 93.3 | 0.82 | 30 | 2411 | 0.8 | 6.0 | 1.8 | 2520 |
| YK1352-6A0 | 220 | 355 | 9.00 | 989 | 93.0 | 0.82 | 27 | 2124 | 0.8 | 6 | 1.8 | 2440 |
| YK1401-6A0 | 280 | 400 | 16.25 | 989 | 93.5 | 0.83 | 33 | 2703 | 0.8 | 6 | 1.8 | 2995 |
| YK1402-6A0 | 315 | 400 | 17.75 | 989 | 93.7 | 0.83 | 37 | 3041 | 0.8 | 6 | 1.8 | 3120 |
| YK1403-6A0 | 355 | 400 | 19.00 | 989 | 93.9 | 0.83 | 42 | 3428 | 0.8 | 6 | 1.8 | 3280 |
| YK1404-6A0 | 400 | 400 | 20.50 | 989 | 94.0 | 0.83 | 48 | 3862 | 0.8 | 6 | 1.8 | 3375 |
| YK1451-6A0 | 450 | 450 | 23.50 | 990 | 94.3 | 0.84 | 51 | 4340 | 0.8 | 6 | 1.8 | 3680 |
| YK1452-6A0 | 500 | 450 | 25.50 | 991 | 94.5 | 0.85 | 57 | 4818 | 0.8 | 6 | 1.8 | 3820 |
| YK1453-6A0 | 560 | 450 | 28.50 | 991 | 94.7 | 0.85 | 63 | 5396 | 0.8 | 6 | 1.8 | 4000 |
| YK1454-6A0 | 630 | 450 | 30.75 | 991 | 94.8 | 0.85 | 72 | 6071 | 0.8 | 6 | 1.8 | 4100 |
| YK1501-6A0 | 710 | 500 | 48.50 | 993 | 95.0 | 0.85 | 79 | 6828 | 0.7 | 6 | 1.8 | 4570 |
| YK1502-6A0 | 800 | 500 | 52.25 | 993 | 95.1 | 0.85 | 90 | 7693 | 0.7 | 6 | 1.8 | 4720 |
| YK1503-6A0 | 900 | 500 | 54.00 | 992 | 95.2 | 0.85 | 101 | 8663 | 0.7 | 6 | 1.8 | 4790 |
| YK1504-6A0 | 1000 | 500 | 58.50 | 993 | 95.3 | 0.85 | 113 | 9616 | 0.7 | 6 | 1.8 | 4980 |
| YK1551-6A0 | 1120 | 560 | 76.00 | 993 | 95.4 | 0.86 | 125 | 10770 | 0.7 | 6 | 1.8 | 6205 |
| YK1552-6A0 | 1250 | 560 | 80.75 | 992 | 95.5 | 0.86 | 139 | 12033 | 0.7 | 6 | 1.8 | 6390 |
| YK1563-6A0 | 1400 | 560 | 88.25 | 992 | 95.6 | 0.86 | 156 | 13476 | 0.7 | 6 | 1.8 | 6445 |
| 750 rev/min - 8poles | | | | | | | | | | | | |
| YK1401-8A0 | 220 | 400 | 19.00 | 740 | 93.0 | 0.79 | 28 | 3226 | 0.8 | 5.5 | 1.8 | 3135 |
| YK1402-8A0 | 250 | 400 | 20.00 | 740 | 93.2 | 0.79 | 38 | 3613 | 0.8 | 5.5 | 1.8 | 3285 |
| YK1403-8A0 | 280 | 400 | 21.50 | 740 | 93.2 | 0.79 | 35 | 3613 | 0.8 | 5.5 | 1.8 | 3385 |
| YK1451-8A0 | 315 | 450 | 28.50 | 744 | 93.4 | 0.8 | 39 | 4043 | 0.8 | 5.5 | 1.8 | 3730 |
| YK1452-8A0 | 355 | 450 | 29.75 | 744 | 93.5 | 0.8 | 44 | 4556 | 0.8 | 5.5 | 1.8 | 3790 |
| YK1453-8A0 | 400 | 450 | 33.25 | 744 | 93.7 | 0.8 | 49 | 5134 | 0.8 | 5.5 | 1.8 | 3980 |
| YK1454-8A0 | 450 | 450 | 35.60 | 744 | 93.8 | 0.81 | 55 | 5776 | 0.8 | 5.5 | 1.8 | 4100 |
| YK1501-8A0 | 500 | 500 | 29.25 | 743 | 94.3 | 0.81 | 59 | 6426 | 0.8 | 5.5 | 1.8 | 3900 |
| YK1502-8A0 | 560 | 500 | 65.75 | 744 | 94.4 | 0.82 | 66 | 7149 | 0.8 | 5.5 | 1.8 | 4200 |
| YK1503-8A0 | 630 | 500 | 70.25 | 744 | 94.5 | 0.82 | 75 | 8086 | 0.8 | 5.5 | 1.8 | 4920 |
| YK1504-8A0 | 710 | 500 | 70.25 | 743 | 94.5 | 0.82 | 84 | 9125 | 0.8 | 5.5 | 1.8 | 4920 |
| YK1551-8A0 | 800 | 560 | 82.25 | 745 | 94.7 | 0.84 | 94 | 10254 | 0.7 | 6 | 1.8 | 6250 |
| YK1552-8A0 | 900 | 560 | 82.75 | 744 | 94.3 | 0.84 | 105 | 11551 | 0.7 | 6 | 1.8 | 6340 |
| YK1563-8A0 | 1000 | 560 | 95.00 | 744 | 94.9 | 0.84 | 117 | 12835 | 0.7 | 6 | 1.8 | 6535 |

Stator Voltage from 3000 UP to 6600 V on Request

* In these motor series, the range of voltage 3-11 KV can be manufactured.

* Motor up to 10MW can be manufactured according to customer order

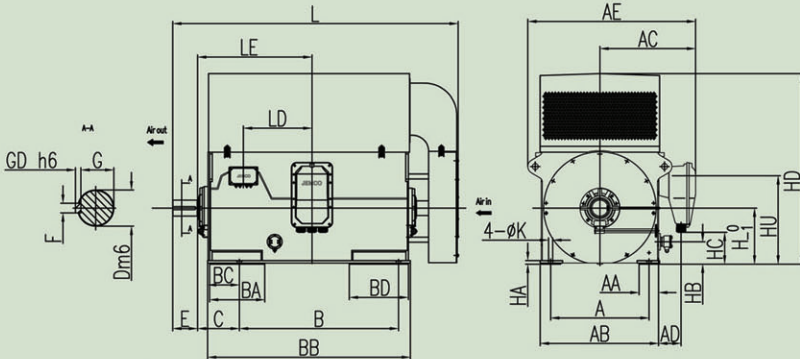


TYPE YK - MEDIUM VOLTAGE (6000V) SQUIRREL CAGE MOTORS

DIMENSIONS



شرکت صنایع ماشینهای الکتریکی جوبین (جمکو)
Jovain Electrical Machines Industries Co.(JEMCO)



| Motor Specification | | | | Dimension symbols | | | | | | | | | | | | | | | | | | | | | | | | | | | | |
|---------------------|------------|------------|-------|-------------------|------|-----|-----|-----|-----|-----|-----|------|------|------|-----|-----|------|------|------|------|------|------|-----|-----|-----|-----|------|------|------|------|-----|-----|
| Frame size | Type NO. | Power (Kw) | poles | A | B | C | D | E | F | G | H | K | L | AA | AB | AC | AD | AE | BA | BB | BC | BD | GD | HA | HB | HC | HD | HU | LE | | | |
| 355 | YK1351-4A0 | 220 | 4 | 630 | 900 | 315 | 100 | 210 | 28 | 90 | 355 | 28 | 2214 | 160 | 870 | 798 | 227 | 1333 | 490 | 580 | 590 | 580 | 16 | 35 | 220 | 67 | 1174 | 630 | 442 | 940 | | |
| | YK1352-4A0 | 250 | | | | | | | | | | | | | | | | | 580 | 560 | 456 | 955 | | | | | | | | | | |
| | YK1353-4A0 | 280 | | | | | | | | | | | | | | | | | 560 | 550 | 541 | 1020 | | | | | | | | | | |
| | YK1354-4A0 | 315 | 550 | | | | | | | | | | 560 | | | | | | 456 | 955 | | | | | | | | | | | | |
| | YK1351-6A0 | 250 | 560 | | | | | | | | | | 560 | | | | | | 456 | 955 | | | | | | | | | | | | |
| | YK1352-6A0 | 220 | 420 | | | | | | | | | | 195 | | | | | | 520 | 541 | 1005 | | | | | | | | | | | |
| 400 | YK1401-4A0 | 355 | 4 | 710 | 1000 | 335 | 110 | 210 | 28 | 100 | 400 | 35 | 2122 | 160 | 920 | 834 | 227 | 1404 | 460 | 1480 | 560 | 535 | 16 | 35 | 220 | 164 | 1300 | 720 | 521 | 958 | | |
| | YK1402-4A0 | 400 | | | | | | | | | | | | | | | | | 435 | 550 | 438 | 925 | | | | | | | | | | |
| | YK1403-4A0 | 450 | | | | | | | | | | | | | | | | | 450 | 560 | 543 | 970 | | | | | | | | | | |
| | YK1404-4A0 | 500 | | | | | | | | | | | 475 | | | | | | 575 | 678 | 1120 | | | | | | | | | | | |
| | YK1405-4A0 | 560 | | | | | | | | | | | 450 | | | | | | 560 | 664 | 1105 | | | | | | | | | | | |
| | YK1401-6A0 | 280 | | | | | | | | | | | 455 | | | | | | 555 | 563 | 1020 | | | | | | | | | | | |
| | YK1402-6A0 | 315 | 430 | | | | | | | | | | 530 | | | | | | 563 | 1020 | | | | | | | | | | | | |
| | YK1403-6A0 | 355 | 455 | | | | | | | | | | 555 | | | | | | 563 | 1020 | | | | | | | | | | | | |
| | YK1404-6A0 | 400 | 430 | | | | | | | | | | 530 | | | | | | 563 | 1020 | | | | | | | | | | | | |
| | YK1401-8A0 | 220 | 420 | | | | | | | | | | 1660 | | | | | | 520 | 508 | 950 | | | | | | | | | | | |
| | YK1402-8A0 | 350 | 440 | | | | | | | | | | 540 | | | | | | 540 | 950 | | | | | | | | | | | | |
| | YK1403-8A0 | 280 | 420 | | | | | | | | | | 520 | | | | | | 520 | 950 | | | | | | | | | | | | |
| 450 | YK1451-4A0 | 630 | 4 | 800 | 1120 | 355 | 120 | 210 | 109 | 450 | 35 | 2177 | 150 | 1000 | 860 | 227 | 1480 | 430 | 1520 | 1520 | 1520 | 1520 | 210 | 510 | 18 | 36 | 220 | 214 | 1425 | 770 | 493 | 950 |
| | YK1452-4A0 | 710 | | | | | | | | | | | | | | | | | 1620 | 1670 | 1700 | 1900 | | | | | | | | | | |
| | YK1453-4A0 | 800 | | | | | | | | | | | | | | | | | 1670 | 1700 | 1900 | 1900 | | | | | | | | | | |
| | YK1454-4A0 | 900 | | | | | | | | | | 1700 | | | | | | | 1900 | 1900 | 1900 | | | | | | | | | | | |
| | YK1451-6A0 | 450 | | | | | | | | | | 1520 | | | | | | | 1520 | 1520 | 508 | 965 | | | | | | | | | | |
| | YK1452-6A0 | 500 | | | | | | | | | | 1550 | | | | | | | 1620 | 1670 | 508 | 965 | | | | | | | | | | |
| | YK1453-6A0 | 560 | 1520 | | | | | | | | | 1520 | | | | | | | 1520 | 508 | 965 | | | | | | | | | | | |
| | YK1454-6A0 | 630 | 1520 | | | | | | | | | 1520 | | | | | | | 1520 | 508 | 965 | | | | | | | | | | | |
| | YK1451-8A0 | 315 | 1520 | | | | | | | | | 1520 | | | | | | | 1520 | 508 | 965 | | | | | | | | | | | |
| | YK1452-8A0 | 355 | 1550 | | | | | | | | | 1550 | | | | | | | 1550 | 508 | 965 | | | | | | | | | | | |
| | YK1453-8A0 | 400 | 1520 | | | | | | | | | 1520 | | | | | | | 1520 | 508 | 965 | | | | | | | | | | | |
| | YK1454-8A0 | 450 | 1520 | | | | | | | | | 1520 | | | | | | | 1520 | 508 | 965 | | | | | | | | | | | |
| 500 | YK1501-4A0 | 1000 | 4 | 900 | 1250 | 475 | 130 | 32 | 119 | 500 | 42 | 2535 | 170 | 1120 | 923 | 227 | 1588 | 480 | 580 | 580 | 580 | 580 | 330 | 36 | 220 | 437 | 1629 | 1000 | 664 | 1165 | 680 | |
| | YK1502-4A0 | 1120 | | | | | | | | | | | | | | | | | 550 | 550 | 550 | 650 | | | | | | | | | | |
| | YK1503-4A0 | 1250 | | | | | | | | | | | | | | | | | 520 | 520 | 520 | 620 | | | | | | | | | | |
| | YK1504-4A0 | 1400 | | | | | | | | | | 490 | | | | | | | 490 | 490 | 590 | | | | | | | | | | | |
| | YK1501-6A0 | 700 | | | | | | | | | | 500 | | | | | | | 500 | 500 | 600 | | | | | | | | | | | |
| | YK1502-6A0 | 800 | | | | | | | | | | 480 | | | | | | | 480 | 480 | 580 | | | | | | | | | | | |
| | YK1503-6A0 | 900 | 460 | | | | | | | | | 460 | | | | | | | 460 | 560 | | | | | | | | | | | | |
| | YK1504-6A0 | 1000 | 430 | | | | | | | | | 430 | | | | | | | 430 | 530 | | | | | | | | | | | | |
| | YK1501-8A0 | 500 | 500 | | | | | | | | | 500 | | | | | | | 500 | 600 | | | | | | | | | | | | |
| | YK1502-8A0 | 560 | 460 | | | | | | | | | 460 | | | | | | | 460 | 560 | | | | | | | | | | | | |
| | YK1503-8A0 | 630 | 430 | | | | | | | | | 430 | | | | | | | 430 | 530 | | | | | | | | | | | | |
| | YK1504-8A0 | 710 | 430 | | | | | | | | | 430 | | | | | | | 430 | 530 | | | | | | | | | | | | |
| 560 | YK1561-4A0 | 1600 | 4 | 1000 | 1400 | 500 | 150 | 250 | 36 | 138 | 560 | 2987 | 195 | 1200 | 965 | 227 | 1690 | 630 | 600 | 2100 | 320 | 730 | 20 | 36 | 221 | 497 | 1913 | 1060 | 590 | 1460 | | |
| | YK1562-4A0 | 1800 | | | | | | | | | | | | | | | | | 600 | 700 | 700 | 800 | | | | | | | | | | |
| | YK1563-4A0 | 2000 | | | | | | | | | | | | | | | | | 555 | 655 | 655 | 755 | | | | | | | | | | |
| | YK1561-6A0 | 1120 | | | | | | | | | | 575 | | | | | | | 675 | 675 | 775 | | | | | | | | | | | |
| | YK1562-6A0 | 1250 | | | | | | | | | | 550 | | | | | | | 650 | 650 | 750 | | | | | | | | | | | |
| | YK1563-6A0 | 1400 | | | | | | | | | | 525 | | | | | | | 625 | 625 | 725 | | | | | | | | | | | |
| | YK1561-8A0 | 800 | 575 | | | | | | | | | 675 | | | | | | | 675 | 775 | | | | | | | | | | | | |
| | YK1562-8A0 | 900 | 545 | | | | | | | | | 645 | | | | | | | 645 | 745 | | | | | | | | | | | | |
| | YK1563-8A0 | 1000 | 515 | | | | | | | | | 615 | | | | | | | 615 | 715 | | | | | | | | | | | | |

* Production of every kind of cooling system is possible according to IEC, (such as IC511)

Jovain Electrical Machines Industries Co.(JEMCO)